

REMINGTON®

smooth&silky®



**Use and
Care Guide**
EP-6025

Register Your New Product Today!

By registering your new Remington® product you will receive these important benefits:
Proof of ownership • Product protection • Product registration • Special offers
Register online at: www.RemingtonProducts.com

IMPORTANT SAFETY INSTRUCTIONS

When using an electrical appliance, basic precautions should always be observed, including the following. Read all instructions before using this appliance.

READ ALL INSTRUCTIONS BEFORE USING.

KEEP AWAY FROM WATER.

DANGER

As with most electrical appliances, electrical parts are electrically live even when switch is off. To reduce the risk of death by electric shock:

- Do not reach for an appliance that has fallen into water. Unplug immediately.
- Do not use while bathing or in the shower.
- Do not place or store appliance where it can fall or be pulled into a tub or sink.
- Do not place in or drop into water or other liquid.
- Always unplug immediately after using.
- Always unplug this appliance before cleaning.

WARNING

To reduce the risk of burns, fire, electric shock or injury to persons:

- An appliance should never be left unattended when plugged in.
- Close supervision is necessary when this appliance is used by, on, or near children or persons with certain disabilities.
- Use this appliance only for its intended use as described in this manual. Do not use attachments not recommended by manufacturer.
- Never operate this appliance if it has a damaged cord or plug, if it is not working properly, if it has been dropped or damaged, or dropped into water.
- Keep the cord away from heated surfaces. Do not wrap the cord around the appliance.
- Never drop or insert any object into any opening.
- Do not use outdoors or operate where aerosol (spray) products are being used or where oxygen is being administered.
- Do not use this appliance with a damaged or broken disc as injury may occur.

- Always store your appliance and cord in a moisture-free area. Make sure your cord is disconnected from the appliance.

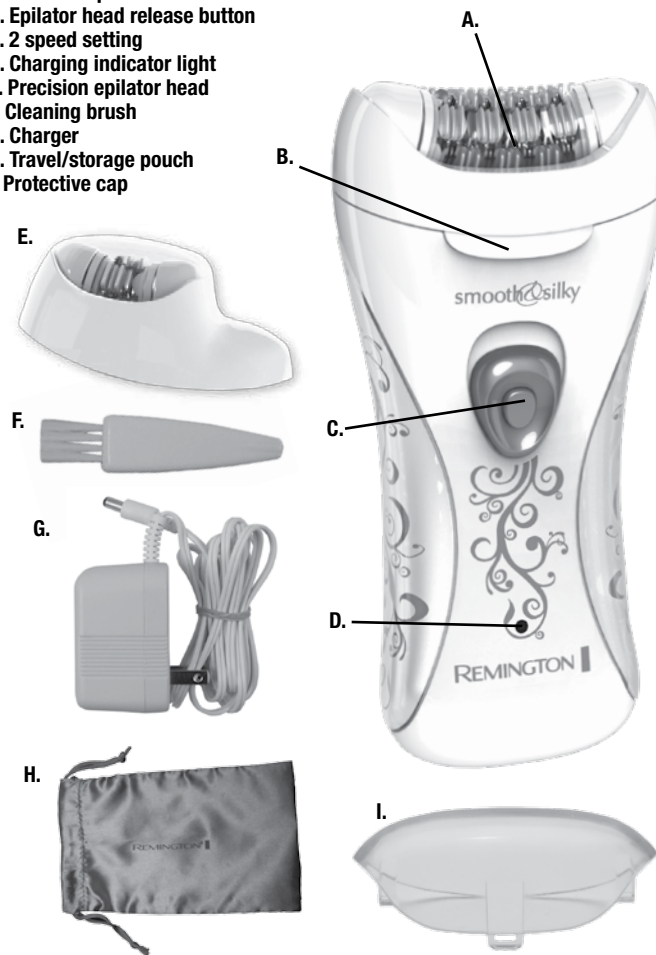
- Make sure unit is "off" before plugging in, always attach plug to appliance first, then to outlet. To disconnect, turn all controls to "off", then remove plug from outlet, then detach power cord from the appliance for storage.

- For household use only.
- The power unit is intended to be correctly oriented in a vertical or floor mount position.

SAVE THESE INSTRUCTIONS

Product Features

- A. Full size epilation head
- B. Epilator head release button
- C. 2 speed setting
- D. Charging indicator light
- E. Precision epilator head
- F. Cleaning brush
- G. Charger
- H. Travel/storage pouch
- I. Protective cap



Helpful Hints:

If you are new to epilation systems, you may experience some initial discomfort. This decreases with each use of the product. With cumulative use of the Remington® epilation system, you may find a decrease in both the quantity and the density of hair growth.

Like waxing, the Remington® epilation system is better than shaving because skin remains silky smooth for up to four to six weeks. But unlike waxing, the Remington® epilator is more efficient, cleaner and can be used in the comfort of your home eliminating the high cost and inconvenience of salon waxing.

Be patient when first using your epilator, as with any new product, it may take a little while to familiarize yourself with the product. Take the time to acquaint yourself with your epilator, as we are confident you will receive years of enjoyable use and complete satisfaction.

Your new epilator is designed to make the removal of unwanted hair as efficient, gentle and easy as possible. The curved epilation head is especially designed to fit the contours of your body. The rotary tweezers catch even the shortest hairs (minimum length .02"/.5mm) and pull them out by the root. The hair that grows back should be soft and thin. Epilating leaves your skin smooth and hair-free for several weeks.

How to Use

- Before epilating, make sure that your skin is clean, dry and free from creams or oils.
- Remove protective cap and turn the epilator on to the desired speed. Low is recommended for fine hair and high is recommended for coarse hair or stronger hair growth.
- Using your free hand, hold the skin taut to make the hairs stand upright.
- Position the epilator flat so that the stainless steel discs are at 90° angle and flat against the skin. The Remington® epilation head is curved to ensure maximum contact with the area of hair removal.
- Using small circular motions, slowly and gently glide the epilator over the skin. This circular motion is the most effective method and makes the process more comfortable. Alternatively, guide the epilator in a slow, continuous movement against the hair growth.
- Repeat within each area until all unwanted hair is removed.
- After epilating, turn the epilator off and replace the protective cap.



Charging/Corded Use Instructions:

- Make sure to charge your new rechargeable epilator for 16 hours before cordless use.
- Take the charging unit and plug its cord into an electric outlet for charging or corded use.
- Securely plug the charging unit into the epilator in a safe place. The red light indicates the epilator is charging.
- This epilator is to be used cord/cordless.

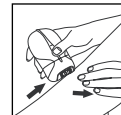
Precision Epilator Head:

- For detailed hair removal replace the full sized epilator head with the precision epilator head.
- Ensure the epilator is turned off.
 - Press the epilator head release button on the front of your epilator.
 - Remove full size epilator head.
 - Place the precision epilator head in the appropriate slots at the top of your epilator.
 - Gently press the precision epilator into place until you hear a "click."

Arm/Leg Epilation

Epilate from the lower arm/leg and slowly move upwards.

To epilate behind the elbow/knee, keep the arm/leg straight to stretch the skin.



Underarms and Bikini

Please be aware that these areas are particularly sensitive. However this sensitivity will reduce after repeated usage.



For more comfort, ensure that the skin is held taut and that the hair is at the optimum length of .02-.05" or .5-1.27mm. If it has been an extended period of time since you have removed hair, trim the hair with a Remington® bikini trimmer or cosmetic trimmer before epilation.



When epilating the underarm area, raise your arm so that the skin is stretched. Guide the epilator in circular movements. Avoid using substances which may cause irritation, such as deodorants, directly after epilation (preferably overnight).

Usage Tips

Caution:

- For your protection your epilator may slow down or even stop if pressed too firmly against the skin.
- Do not use the epilating head on irritated skin or skin with varicose veins, rashes, spots, moles or wounds without consulting a doctor. People with reduced immune response e.g. during pregnancy, or people who suffer from diabetes mellitus, hemophilia or immunodeficiency should also consult their doctor before using this product.
- For hygiene reasons do not let another person use your epilator. It is recommended for use by one person only.

- Using an epilator may cause reddening or irritation of the skin. This is a normal reaction that will quickly disappear. However, you should consult your doctor if the irritation has not disappeared within three days.
- All methods of hair removal from the root can result in ingrown hairs depending on the condition of the skin and hair. Regular exfoliation helps to prevent ingrown hairs. In some cases inflammation of the skin could occur when bacteria penetrate the skin (e.g. when sliding the appliance over the skin). Thorough cleaning of the epilation head before each use will minimize the risk of infection.
- When using an epilator for the first time it is best to try it on a small area to get used to the process of epilation.
- The optimum length for hair removal is between .02-.05" or .5-1.27mm. Epilation is easier and more comfortable with this hair length.
- Take a warm bath or shower before epilating and exfoliate to remove dead skin cells. This will make your skin more pliable, making the epilation process less uncomfortable.
- Your skin should be clean and dry of creams or oils.

For the Best Results:

- Best results are achieved by gliding the epilator lightly over the skin in **short, circular motion-sweeping the head up and away** at the end of each pass. The discs should gently glide over the skin, barely touching it. If you press too hard, a built-in safety measure slows or stops the discs altogether.
- Repeat the motion within the same area a few times until all hair is removed. The duration of use depends on the quantity and density of the hair. After several months of cumulative use, there will be less hair and those remaining will be thinner. There will also be a longer interval between re-growth of the hair.
- You may want to epilate in the evening so that any possible reddening can disappear overnight.
- After use, you can use a body cream or aloe lotion to soothe the skin and reduce skin irritation.
- Regularly exfoliate after epilation to avoid ingrown hairs.
- For best results, the unit should be cleaned after every use.
- The Remington® epilator can be used safely on the bikini line. If the bikini line hair is too long, trim first with either scissors or a trimmer. Afterwards, you can use the epilator to remove the hair from the root for weeks for a smooth and beautiful bikini line.

- Your Remington® epilator can be used safely to remove a single hair from the body.
- Facial use for upper lip and chin only.
- You should initially use your epilator about once a week. Touch-ups will contribute to the weakening of

your hair and will keep your legs constantly smooth. Removing hair once a week is recommended particularly for women with sensitive skin because the process is gentle and only takes a few minutes.

Cleaning and Maintenance

Storage

Ensure that the protective cap is on the epilator before storing.

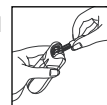
Never wrap the cord around the appliance, since this will cause the cord to wear prematurely and break, thus voiding warranty. Handle the cord carefully and avoid twisting, jerking, or straining it, especially at cord connections.

Caring For Your Epilator

To ensure long lasting performance of your epilator, clean the head assembly regularly. Always keep the protective cap on the epilation head when the epilator is not in use.

CLEANING THE EPILATION HEAD AFTER EACH USE

- Ensure the epilator is turned off and disconnected from the outlet.
- Turn the head assembly upside down.
- Brush the accumulated hair from the tweezers by turning the barrel manually.



- The full size and precision epilator heads may be cleaned under water. Make sure to remove the epilator heads from the body and submerge ONLY the heads under water.
- Allow to dry completely before reattaching the cap.

NOTE: The body of the epilator is NOT washable.
DO NOT SUBMERGE IN WATER. YOU MAY ONLY SUBMERGE THE PRECISION EPILATORS HEADS AFTER THEY HAVE BEEN REMOVED FROM THE BODY.

CAUTION:

Epilator head: Suitable for cleaning under water.

Epilator body: **NOT SUITABLE FOR CLEANING UNDER WATER.**

TO REMOVE RESIDUE

To remove residue from the stainless steel tweezers of the curved epilator head, dampen a swab with alcohol. Gently run the swab over the tweezers until the residue has been removed.

CAUTION: Make sure that the cotton swab is not soaked in alcohol as this may damage the epilator head.

NOTE: This appliance does not contain any user-serviceable parts.

Performance Guarantee

Limited Two-Year Warranty

Spectrum Brands, Inc. warrants this product against any defects that are due to faulty material or workmanship for a two-year period from the original date of consumer purchase. This warranty does not include damage to the product resulting from accident or misuse.

If the product should become defective within the warranty period, we will replace it free of charge. Return your product and sales receipt with your name, address and day time phone number to: Remington Returns Center, 507 Stokely Dr., P.O. Box 1, Deforest, WI 53532. For more information call 800-736-4648 or 800-268-0425 in Canada.

KEEP ORIGINAL SALES RECEIPT AS PROOF OF PURCHASE FOR WARRANTY PURPOSES.

This warranty does not cover products damaged by the following:

- Accident, misuse, abuse or alteration of the product
- Servicing by unauthorized persons
- Use with unauthorized accessories
- Connecting it to incorrect current and voltage
- Wrapping cord around appliance causing premature wear & breakage
- Any other conditions beyond our control

Performance Guarantee

SPECTRUM BRANDS, INC. SHALL NOT BE RESPONSIBLE FOR ANY INCIDENTAL, SPECIAL OR CONSEQUENTIAL DAMAGES RESULTING FROM THE USE OF THIS PRODUCT. ALL IMPLIED WARRANTIES, INCLUDING BUT NOT LIMITED TO IMPLIED WARRANTIES OF FITNESS AND MERCHANTABILITY, ARE LIMITED IN DURATION TO TWO YEARS FROM DATE OF ORIGINAL PURCHASE.

This warranty gives you specific legal rights and you may also have other rights which vary from state to state or province to province. Some states do not allow the exclusion or limitation of incidental, special or consequential damages.

Performance Guarantee Spectrum Brands, Inc. Money-back Offer

If within 30 days after you have purchased your Remington® branded product, you are not satisfied and would like a refund, return it with the sales slip indicating purchase price and date of purchase to the retailer from whom it was purchased. Spectrum Brands, Inc. will reimburse all retailers who accept the product within 30 days from the date of purchase. If you have any questions concerning the money-back guarantee, please call 800-736-4648 in the U.S. or 800-268-0425 in Canada.

120V 60 Hz

© REMINGTON and SMOOTH & SILKY are Registered Trademarks of ROVCAL, INC., a subsidiary of Spectrum Brands, Inc.

Questions or comments:

Call 800-736-4648 in U.S. or 800-268-0425 in Canada. Or visit www.RemingtonProducts.com

Dist. by: Spectrum Brands, Inc., Madison, WI 53711

Dist. by: Spectrum Brands Canada, Inc., Mississauga, ON L5L 0A1

© 2010 ROVCAL, INC. 05/10 Job# 40063

Designed in USA

Manufactured to Remington's specifications in the PRC.

T22-29077

Contains



listed adaptor